

Secondary Network Meeting

Course code: RH219 C58

Date(s): 11th January

Time(s): 4:00-5:00pm

Fee: £0 (free)

► [Book here](#) or search code RH219 C58 at www.stem.org.uk/cpd

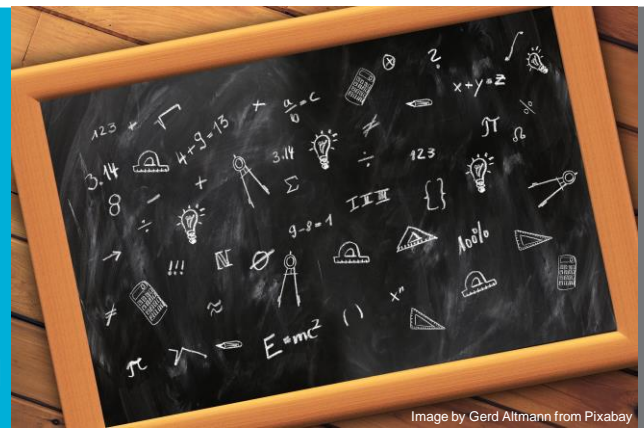


Image by Gerd Altmann from Pixabay

REMOTE

ECT Network

Course code: RH219 C04

Date(s): 12th January

Time(s): 4:00-5:00pm

Fee: £0 (free)

► [Book here](#) or search code RH219 C04 at www.stem.org.uk/cpd



Image by Okan Caliskan from Pixabay

REMOTE

KS3 Curriculum Progression

Course code: RH775 C02

Date(s): 19th January

Time(s): 2:30-4:30pm

Fee: £30

► [Book here](#) or search code RH775 C02 at www.stem.org.uk/cpd



Image by Gerd Altmann from Pixabay

REMOTE

Strengthening Practical work in Chemistry, at St Clement Danes

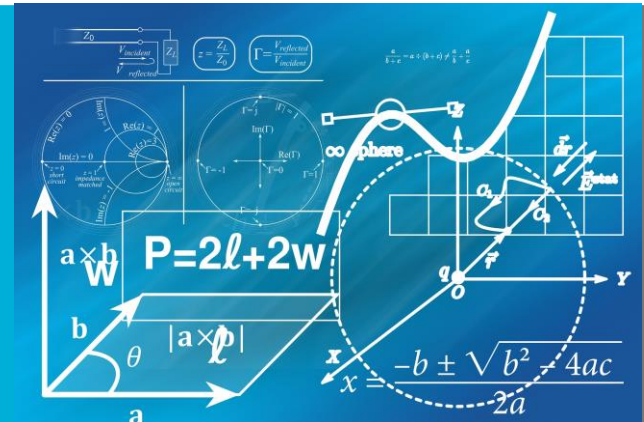
Course code: RH202 C02

Date(s): 26th January

Time(s): 9:30am-3:00pm

Fee: £185

► [Book here](#) or search code RH202 C02 at www.stem.org.uk/cpd



FACE TO FACE

Supporting EAL Learners in Science

Course code: RH348 C01

Date(s): 26th January

Time(s): 2:00-5:00pm

Fee: £90

► [Book here](#) or search code RH348 C01 at www.stem.org.uk/cpd



Image by Gerd Altmann from Pixabay

REMOTE

CLEAPSS - Radiation Protection Supervisor Training, at St Clement Danes School

Date(s): 1st February
Time(s): 9:00am-4:00pm
Fee: £140 for CLEAPSS members, £280 for non-members

▶ [Book here](#) (please ensure you book 1st February)

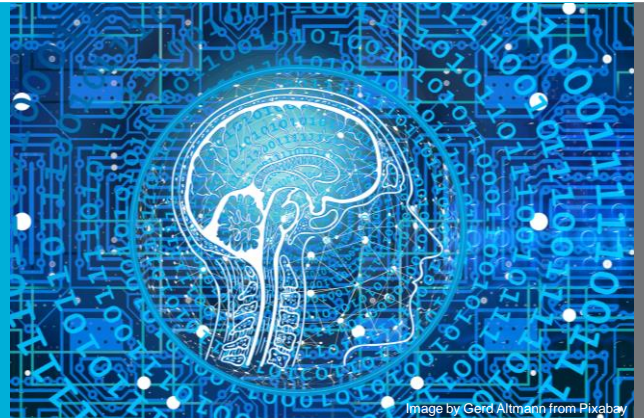


FACE TO FACE

ECT Conference, at St Clement Danes

Course code: RH227 C03
Date(s): 2nd February
Time(s): 9:30am-3:00pm
Fee: £100

▶ [Book here](#) or search code RH227 C03 at www.stem.org.uk/cpd

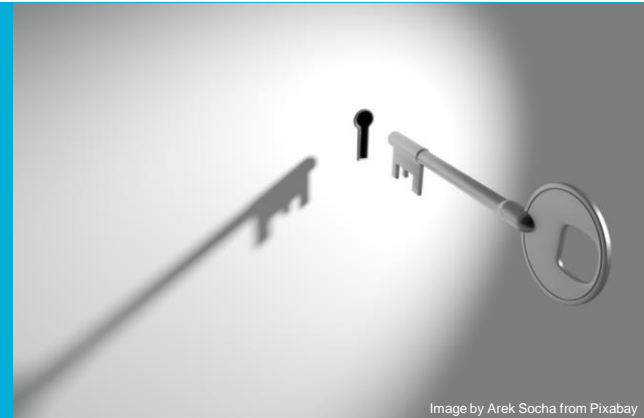


FACE TO FACE

Ofsted, Leading on Secondary Science Curriculum, at St Clement Danes

Course code: RH298 C33
Date(s): 3rd February
Time(s): 1:30-4:30pm
Fee: £100

▶ [Book here](#) or search code RH298 C33 at www.stem.org.uk/cpd



FACE TO FACE

Leading Secondary Science Curriculum Design

Course code: RX020 C01
Date and time(s): 8th February 2:30pm-4:30pm
Date and time(s): 9th February 3:00-4:00pm
Fee: £100

▶ [Book here](#) or search code RX020 C01 at www.stem.org.uk/cpd

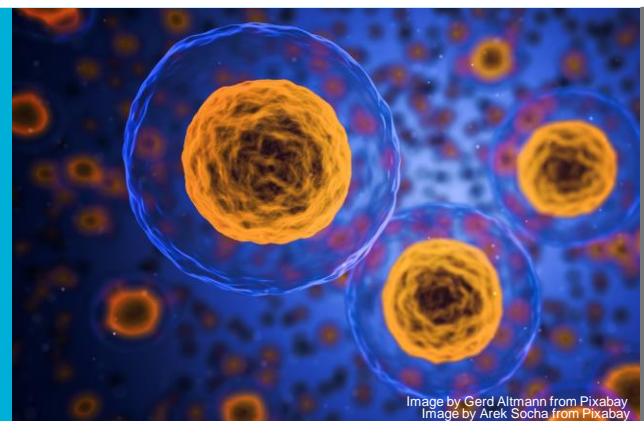


REMOTE

New to A-Level Chemistry, at Dr Challoner's High

Date(s): 9th February
Time(s): 9:00am-3:00pm
Fee: £185

▶ Please contact hubs@stclementdanes.herts.sch.uk to book your place



FACE TO FACE

New To Lab Tech - Session 1 and 2

Course code: RH601 C01 [LINK TBC]
Date and time(s): 10th February 10:30-1:00pm
Date and time(s): 10th March 1:00-3:30pm
Fee: £100

▶ [Book here](#) or search code RH601 C01 at www.stem.org.uk/cpd



REMOTE

Behaviour Management in Science

Course code: RH222 C02
Date and time(s): 8th March 3:30-5:30pm
Date and time(s): 16th March 3:30-5:30pm
Fee: £100

▶ [Book here](#) or search code RH222 C02 at www.stem.org.uk/cpd



REMOTE

Chemistry for ECT, at St Clement Danes

Course code: RH298 C38
Date(s): 9th March
Time(s): 1:00-4:00pm
Fee: £100

▶ [Book here](#) or search code RH298 C38 at www.stem.org.uk/cpd

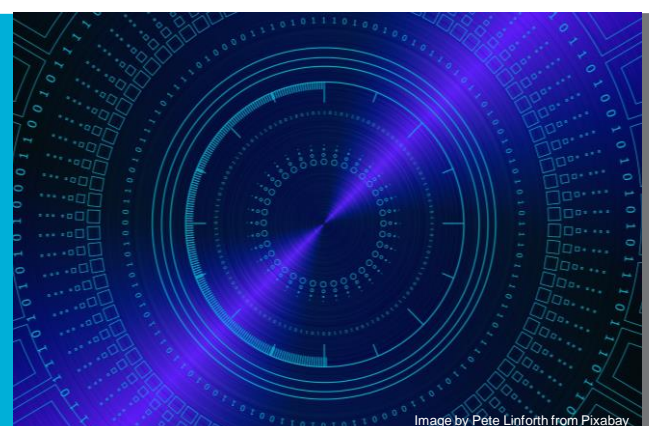


FACE TO FACE

STEM Networking at Buckinghamshire UTC

Course code: RH298 C50
Date(s): 30th March
Time(s): 4:00-6:00pm
Fee: £0 (free)

▶ [Book here](#) or search code RH298 C50 at www.stem.org.uk/cpd



FACE TO FACE

Did you know we can offer school Science support? If you are an experienced Science teacher, you can book on to be trained as a Facilitator for our hub*:

Session 1: 18th January: FD101 F01: Facilitating Effective Professional Development
9:30am-3:30pm at St Clement Danes. [Book here](#)

Session 2: 1st March: FD102 F01: Facilitating with STEM Learning
1:00-4:00pm, remote. [Book Here](#)

Session 3: 22nd March: FD104 F01: Facilitating Effective Professional Development in Science
1:00-4:00pm at St Clement Danes. [Book Here](#)

**Please make sure you book all three dates and you have permission from your SLT to become a Facilitator*

Science Learning Partnership: covering West Herts, Bucks, Slough, Maidenhead and Windsor
If you have any questions, please contact Mandy or Kim hubs@stclementdanes.herts.sch.uk



Science Hub - South Central SLP

Who we are and what we do?



We are one of 27 Science Hubs across England (we are also a Chemistry Specialist Delivery Hub for England)

We are funded by the Department of Education through a company called STEM Learning

STEM Learning's vision is to achieve a world-leading STEM education for all young people across the UK

We cover West Hertfordshire, Buckinghamshire, Slough, Maidenhead and Windsor

We provide a range of high quality courses and network meetings for Science Teachers and Technicians to enhance their skills

Our trained Facilitators are teachers and consultants who offer excellent teaching and learning from early years up to A Levels

99% of teachers who have attended our CPD in the past have rated our courses as Very Good or Good

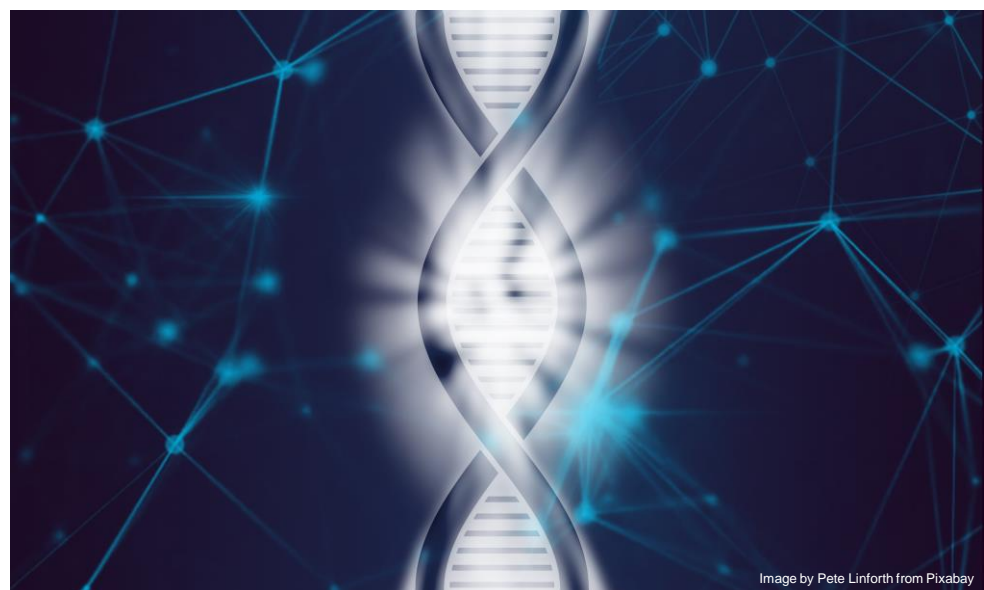


Image by Pete Linforth from Pixabay

We offer:

- Network Meetings
- Conferences
- Subject Knowledge Enhancement
- Leadership
- Ofsted preparation
- Practical work
- Science Pedagogy
- Technician CPD

There is a set charge across England that all Science Hubs have to adhere to, however, as a Hub we try to subsidise events as much as possible.

All our network meetings are fully funded and will always remain so. We can only maintain this if you attend the network meetings

Ask us if you need any support including: Needs Analysis, Bespoke Courses for your team, individual support for teachers, Leadership training for colleagues new to their role, observation opportunities to see experienced teachers in their lessons and Subject Knowledge Enhancement including when teaching out of your specialism

To find out more about us and what courses we offer, please contact Mandy or Kim hubs@stclementdanes.herts.sch.uk



Image by Chokniti Khongchum from Pixabay



What are you looking for?

PROFESSIONAL DEVELOPMENT

We offer high-impact professional development across the UK, and online, based on the latest developments in both pedagogy and STEM subjects. We can also tailor professional development to your school's specific needs with our bespoke CPD.

CAREERS EDUCATION

As well as a host of excellent resources on our website including the Careers Toolkit, we also run the STEM Insight programme to give you a unique experience in industry or university through inspiring placements.

INSPIRATION

We've got a host of ways to help you inspire your students: why not bring a STEM Ambassador into your school to talk about STEM subjects and careers, or start a STEM Club to build confidence and teamwork skills?

COMMUNITY

Share your ideas and challenges with teachers and technicians through our online groups and at our networking events. And join us on Twitter - we have over 20,000 like-minded educators following us.



STEM
LEARNING

National STEM Learning
Centre and Network

RESOURCES

We have over 38,000 quality, STEM teaching resources, available online or at our centre. You can also browse teacher-made resources and submit your own.

RECOGNITION

Our recognition schemes and awards allow you, your department and school to showcase the impact you have on your students and colleagues.

STEM Learning operates the National STEM Learning Centre and Network, alongside other projects supporting STEM education

www.stem.org.uk