

Bespoke Staff meeting at your school

Date and time: on a date that fits with your school program for all your teachers, from 3:30pm

Topics: Thinking, Doing, Talking Science / Working Scientifically or you can request bespoke topic(s)

Fee: £50

▶ **Contact us at:** hubs@stclementdanes.herts.sch.uk to book



FACE TO FACE

Developing Science Curriculum using Ofsted framework

Course code: RH184 C01

Date(s): 20th and 25th January

Time(s): 1:00-3:30pm on both days

Fee: £100

▶ **Book here** or search code RH184 C01 at www.stem.org.uk/cpd



REMOTE

Chemistry in the Primary Curriculum, at Downley School

Course code: RH198 C29

Date(s): 27th January

Time(s): 4:00-5:00pm

Fee: £30

▶ **Book here** or search code RH198 C29 at www.stem.org.uk/cpd



Image by Gerd Altmann from Pixabay

FACE TO FACE

Linking Maths with Science, at Chepping View Primary

Course code: RH113 C01

Date(s): 2nd March

Time(s): 9:00am-3:00pm

Fee: £185

▶ **Book here** or search code RH113 C01 at www.stem.org.uk/cpd



FACE TO FACE

Primary Science Network Meeting

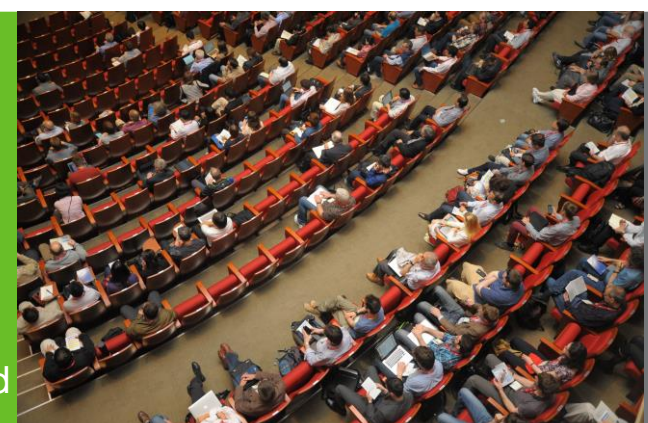
Course code: RH121 C07

Date(s): 14th March

Time(s): 3:45-4:45pm

Fee: £0 (free)

▶ **Book here** or search code RH121 C07 at www.stem.org.uk/cpd



REMOTE

Science Learning Partnership: covering West Herts, Bucks, Slough, Maidenhead and Windsor
If you have any questions, please contact Mandy or Kim hubs@stclementdanes.herts.sch.uk

Biology in the Primary Curriculum, at Downley School

Course code: RH198 C28

Date(s): 15th March

Time(s): 4:00-5:00pm

Fee: £30

▶ [Book here](#) or search code RH198 C28 at www.stem.org.uk/cpd



Image by Peter Doleteky from Pixabay

FACE TO FACE

Raising Attainment in Primary Science - Conference

Course code: RH124 C11

Date and time(s): 17th March 12:30-3:00pm

Date and time(s): 23rd March 12:30-3:00pm

Fee: £100

▶ [Book here](#) or search code RH124 C11 at www.stem.org.uk/cpd



Image by Chokniti Khongchum from Pixabay

REMOTE

East of England Primary ECT Conference

Course code: RH124 E10

Date(s): 24th March

Time(s): 9:00am-3:30pm

Fee: £100

▶ [Book here](#) or search code RH124 E10 at www.stem.org.uk/cpd



REMOTE

If you're a Primary school in Bucks, we are the Computing Hub for your area.

You can find our courses on the website:

<https://hubs.stclementdanes.herts.sch.uk/> or you can contact the Computing Hub: TeachComputing@stclementdanes.herts.sch.uk



@southcentralslp

Science Hub - South Central SLP

Who we are and what we do?



We are one of 27 Science Hubs across England (we are also a Chemistry Specialist Delivery Hub for England)

We are funded by the Department of Education through a company called STEM Learning

STEM Learning's vision is to achieve a world-leading STEM education for all young people across the UK

We cover West Hertfordshire, Buckinghamshire, Slough, Maidenhead and Windsor

We provide a range of high quality courses and network meetings for Science Teachers and Technicians to enhance their skills

Our trained Facilitators are teachers and consultants who offer excellent teaching and learning from early years up to A Levels

99% of teachers who have attended our CPD in the past have rated our courses as Very Good or Good

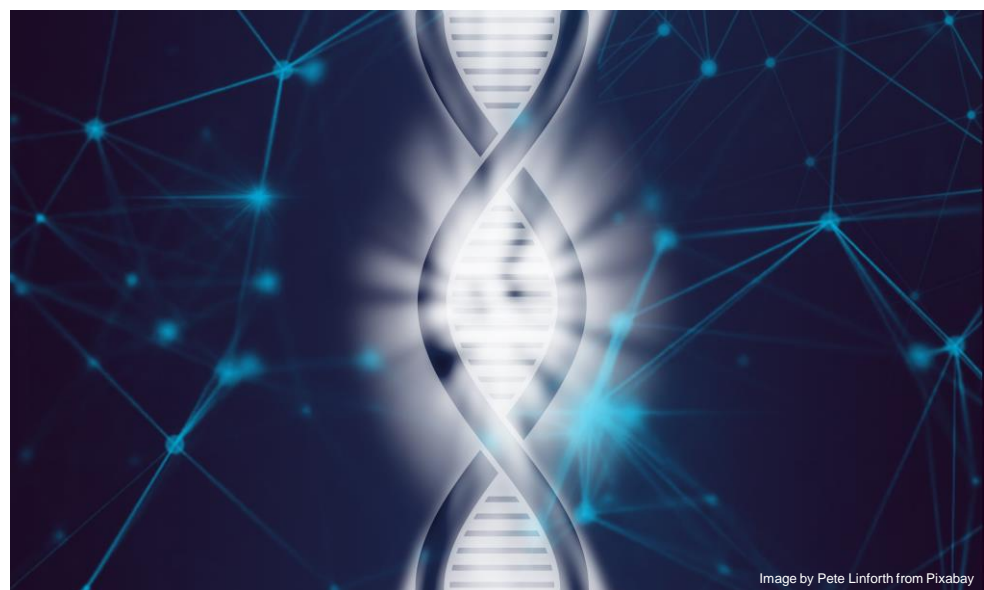


Image by Pete Linforth from Pixabay

We offer:

- Network Meetings
- Conferences
- Subject Knowledge Enhancement
- Leadership
- Ofsted preparation
- Practical work
- Science Pedagogy
- Technician CPD

There is a set charge across England that all Science Hubs have to adhere to, however, as a Hub we try to subsidise events as much as possible.

All our network meetings are fully funded and will always remain so. We can only maintain this if you attend the network meetings

Ask us if you need any support including: Needs Analysis, Bespoke Courses for your team, individual support for teachers, Leadership training for colleagues new to their role, observation opportunities to see experienced teachers in their lessons and Subject Knowledge Enhancement including when teaching out of your specialism

To find out more about us and what courses we offer, please contact Mandy or Kim
hubs@stclementdanes.herts.sch.uk



Image by Chokniti Khongchum from Pixabay



PROFESSIONAL DEVELOPMENT

We offer high-impact professional development across the UK, and online, based on the latest developments in both pedagogy and STEM subjects. We can also tailor professional development to your school's specific needs with our bespoke CPD.

CAREERS EDUCATION

As well as a host of excellent resources on our website including the Careers Toolkit, we also run the STEM Insight programme to give you a unique experience in industry or university through inspiring placements.

INSPIRATION

We've got a host of ways to help you inspire your students: why not bring a STEM Ambassador into your school to talk about STEM subjects and careers, or start a STEM Club to build confidence and teamwork skills?

COMMUNITY

Share your ideas and challenges with teachers and technicians through our online groups and at our networking events. And join us on Twitter - we have over 20,000 like-minded educators following us.



National STEM Learning
Centre and Network

RECOGNITION

Our recognition schemes and awards allow you, your department and school to showcase the impact you have on your students and colleagues.

RESOURCES

We have over 38,000 quality, STEM teaching resources, available online or at our centre. You can also browse teacher-made resources and submit your own.